

The Lexington United Methodist Church
an inclusive and reconciling United Methodist Congregation

Newsletter

April 2011

Vol. 59, No. 4

From the Pastor's Study...

Paradoxes of Promise

Late March teases us with chilling mornings giving way to warm sunshine. We see the first shoots of spring bursting from ground which hardens under starry skies. The first brave robins sing, but not for long. Food is still scarce and there is much work to be done. T.S. Eliot characterized April as "the cruelest month, breeding/Lilacs out of the dead land, mixing/Memory and desire, stirring/Dull roots with spring rain." This is the mini-season filled with the paradoxes of promise.

Within our nature there is something which yearns for order and regularity, consistency and simplicity. We hunger for stability in the midst of turmoil and disruption. We want that perfect day to last forever. Instead we get disregulation and complexity. And we may wonder why God could not have made it all a little more to our liking - just a little.

Truth be told, we live in a vastly complicated universe, made more so by the seeming arbitrariness of human choice. There is so much which challenges our capacity to make sense of it all. I think I'm only beginning to grasp how global warming can produce more severe winters than ever before. Hint: it has something to do with increased atmospheric moisture and the snows in Siberia - or so I'm told. And I'm still struggling with how a peace prize-winning leader can be waging two (now three) wars.

Then there is the Great Paradox: Death giving way to Life. As Lent lengthens and Easter draws near, we reflect on the call of Jesus. Unless you embrace death, he says, you cannot really live. All right, it really goes, "those who want to save their life will lose it, and those whose lose their life for my sake, and for the sake of the gospel, will save it (Mk 8: 35)." Then he goes on to prove the point by giving his own life for the gospel and rising from death. So we believe and proclaim to the world.

The best I can figure is that beneath the mysterious paradoxes of life and death there is a power which will inevitably express itself. And the power expresses itself in love. We call the power God because, as love, we experience this power in a very personal way, even though it grounds the whole universe. In God resides whatever intelligibility gives meaning to the paradoxes. In God the wasteland will always be turned into a garden, the darkness into light, and death into life which is without end. The paradox is pregnant with promise. And we celebrate and give joyful thanks for this assurance of divine love.



Richard Capron, pastor

April 2011 Worship

Worship begins at 10:00 am with Prelude,
Gathering Music and Nursery Care

April 3

Fourth Sunday in Lent

Holy Communion

One Great Hour of Sharing

1 Samuel 16: 1-13; John 9: 1-41

Sermon: *How Do You See?*



April 10

Fifth Sunday in Lent

Ezekiel 37: 1-14; John 11: 1-45

Sermon: *Can Bones Live?*

April 17

Palm/Passion Sunday

Matthew 21: 1-11; Matthew 26:14-27:66

Sermon: *Have You Reached a Verdict?*

April 21

Maundy Thursday

7:00 pm Holy Communion

and Footwashing

1 Corinthians 11: 23-26; John 13: 1-17, 31b-35

Sermon: *Have You Been Washed?*

April 24

Easter Sunday

7:00 am Sunrise Service

in Prayer Garden

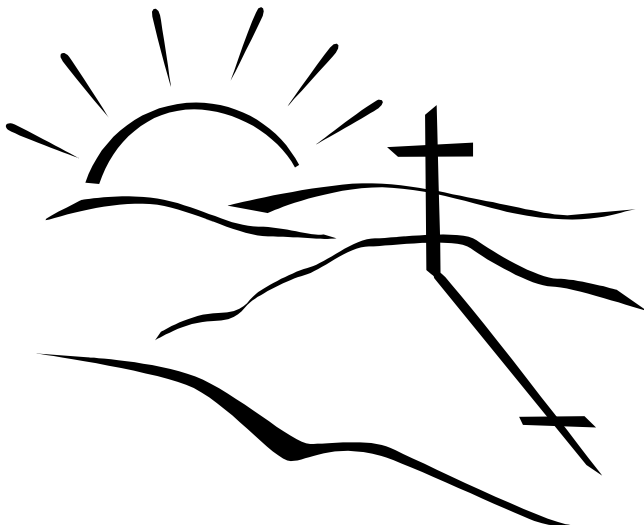
Light breakfast to follow

10:00 am Worship

Roxbury Food Cupboard Collection

Colossians 3: 1-4; John 20: 1-18

Sermon: *Does He Live?*



New Pastoral

Appointment at LUMC

The Metro West Hope District of the New England Conference of The United Methodist Church has appointed The Reverend Leigh Dry as Pastor of the Lexington United Methodist Church. Rev. Dry will begin her pastorate July 1, 2011. She is a graduate of Purdue University, with a Masters degree from Montclair State University. She completed her M.Div. from Boston University in December 2002. Leigh and her husband Dave have two children, Matthew and Steven. They will reside in the church parsonage at 71 Freemont Street, Lexington.

Rev. Dry has been serving as Pastor of Grace United Methodist Church in Hopkinton, MA. She also serves as Assistant Pastor of Westborough United Methodist Church in Westborough. Grace United Methodist is a spin-off of the Westborough Church founded to serve Methodist in the Hopkinton/ Holliston area.

Adult Studies in April

11th Hour for Adults

In April, we will continue to explore our spirit nature (Trust, Love, and Freedom) using the book *Jacob's Dream* and the enneagram analysis of personalities. Basically, this book is about describing pathways to Spirit Maturity. Christians have called this Sanctification and Buddhists say Enlightenment. We might also call it Aliveness. Our twelve session study ends on June 19.

If others would like to join in April beginning on April 10, they could make up the personality assessment and obtain a great deal from this series. Talk with those participating if you wish and please see Ken Kreutziger.

Prayer List Updates

To update the prayer list printed in the weekly worship bulletin, contact Richard Capron or Allyson Printz. Also, if you know of someone in need of a pastoral visit, please inform Richard.

Michael Anderson, Marilyn Antonellis, Marisa Beecy, Bonnie Codier, Cal Coffey, Ione and John Garing, Theresa Gleason, Cynthia Good, Family of Camille Goodwin, Muriel Grimes, Myles Johnson and family, Lennie Leitman, Pastor Absalon Lopez and Felix, Lenn Murphy, Norma Monbouquette, Steve Mosiello, Bill Santelmann, Shannon Searson, Scott Tolar, Rainer von Saleski, Don Walker and Elizabeth Walker.

Japan Emergency

Dear Friends,

March 21, 2011

I join you in lifting up the people of Japan in prayer during this time of crisis. We grieve with them and stand with them in solidarity. Once again, I am struck by the extravagant generosity of United Methodists who are supporting UMCOR's efforts to bring healing and hope to Japan. We have received thousands of phone calls, emails, Facebook posts, and donations from people whose hearts are aching for the people of Japan and who are looking for meaningful ways to respond. Many churches in our connection are collecting offerings to raise money for UMCOR. I want to share with you how we are responding on your behalf to the great needs.

UMCOR's Response: On Friday, March 11, the General Board of Global Ministries reached out to missionaries and partners in Japan to confirm their safety and ask how we can help. The Wesley Center, affiliated with United Methodist Women, is offering shelter to those who are displaced. UMCOR set up an Advance account for the Pacific Emergency. Once we understood better what the scope of the disaster was, we changed the name to "Japan Emergency" and updated the description:

"UMCOR is working through relief and church partners in Japan to respond and provide immediate assistance and long-term rehabilitation. With these partners, UMCOR is meeting the most basic humanitarian needs in northern Japan such as providing clean drinking water, food, cooking and eating supplies, clothing, and fuel for heating."

We anticipate working with our partners to direct your gifts to earthquake and tsunami survivors in Japan as needs and plans for response are identified. All grant requests go through a rigorous approval process and require a reporting of how the funds are used. It is important to us that we are good stewards of your gifts. We are always accountable for how UMCOR funds are used. Two independent charity watch groups, Charity Navigator and American Institute of Philanthropy, have affirmed UMCOR's trustworthiness by recognizing us with the highest ratings.

Many supplies are available in Japan and sending funds directly to our partners supports the local economy while ensuring that they are getting exactly what they need. I am always sad when I visit Haiti and other disaster affected areas and see the unopened boxes of clothes, medicine, and equipment that go unused because well meaning people have misdirected their good will. A practi-

cal example was pointed out to me by a physician in Haiti, who explained that it is important to purchase medicine in the country because the directions for use will be in the native language. An additional concern is that sending an unsolicited shipment into the disaster area runs the risk of hampering relief efforts, clogging runways, and creating an added burden to the system because there is no efficient way to distribute the shipment.

UMCOR is committed to standing with the people of Japan into the recovery phase. We will continue working through our church and relief partners to provide shelter, food, and clean water to survivors of this crisis. Regular updates can be found in the UMCOR Hotline, on our website, and on Facebook. Please continue to hold the people of Japan in your prayers. I am overwhelmed by the outpouring of love into the world by our United Methodist Church.

Grace and peace,

- adapted from a letter by Rev. Cynthia Fierro Harvey,
Deputy General Secretary, UMCOR

Additional gifts (designated "Japan Emergency") can be placed in the Sunday offering or sent to the LUMC office.



Finance Corner

In February 2011, LUMC's financial results were as follows:

Total income through 2/28/11:

\$36,042

Budgeted income through 2/28/11:

\$36,809

Total expense through 2/28/11:

\$35,517

Budgeted expense through 2/28/11:

\$39,159

So far this year our income exceeds our expenses and all our bills are paid. Thank you all for your contributions and your commitment to LUMC.

- Eric Shank, Chair, Finance



Marla's Musings



As our Lenten journey continues, the youngest children (and their parents) are adjusting to renovations in the nursery, the other children (and their teachers)

are adjusting to a new curriculum, and two of the youth are preparing to be confirmed as full members of LUMC. Of course, almost all of the changes in the nursery are completely positive, the new curriculum for children is fun and engages the kids in new ways with the Bible, and becoming a fully-responsible member of a congregation is an empowering transition for young people. It's amazing how difficult change can be for all of us - even when it's almost totally positive!

If this is true for those changes in our lives that are external, how much more true it can be for changes that are internal. Last month I encouraged readers to take on a spiritual discipline for Lent. I have committed to writing regularly to my mother and some other people who have been important in my life. I wanted to show my gratitude for all they have done for me and taught me. I also wanted to share with them new things that I've learned about life and faith and to ask them for their thoughts. This is an enormously gratifying practice - almost totally positive - and it doesn't take much time. My goal has been two letters each week.

Although this practice has really changed my relationship with some of those with whom I'm corresponding in powerful ways, the changes are difficult. Some are teachers and mentors who I've never interacted with as an equal - an adult. This new way of being with some of the most important people in my life takes me beyond the familiar and into uncharted territory, and when I'm just really tired at the end of the day, that may not be where I feel like going.

Our lives are full of these transitions and uncharted territories. Are we engaging them?

Throughout April, transgender people and their allies in Massachusetts will be focusing their attention on the State House in an effort to pass legislation that would add gender identity and expression to the state's non-discrimination law. Throughout Massachusetts today, transgender and gender non-conforming people can

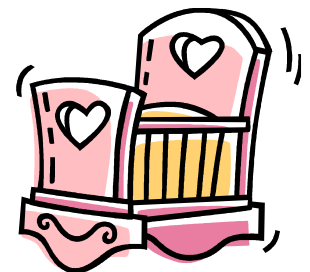
legally be fired or denied work on the basis of their gender/expression of gender and denied equal access to housing and public accommodations (including restrooms). I remember the first time I was pushed beyond my comfort zone around the issue of gender - pushed into grappling with the reality that gender is not binary (male or female), but a spectrum. Perhaps this idea makes you uncomfortable. As we journey together toward Easter, we'll have the opportunity to sign postcards in support of full civil rights and protections for transgender people, to write to our elected leaders to encourage them to take action, and to learn more about the issue and the people who often are so needlessly tossed aside for being themselves.

Can we stretch a little more (together) on this Lenten journey? Let's find out!

- Marla Marcum, CE Director

Nursery Schedule

- April 3 Michelle Walker
Jane Atkins
- April 10 Pisha Chen
Janice Herndon
- April 17 Theresa Walker
Melanie Walker
- April 24 Jane Atkins
Julie Munro

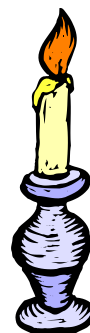


Godly Play

- April 3 Children attend worship
- April 10 Becky Linton, Julie Munro
- April 17 Rae Lavalla, Louise Kreutziger
- April 24 Children attend Easter worship

Acolyte Schedule

- April 3 Lucas and Thomas
- April 10 Andy
- April 17 Theo
- April 24 Lucas and Ryan



Race to Nowhere

Race to Nowhere (PG-13), the acclaimed film about the epidemic of unhealthy academic stress among students across America, is coming to Lexington at the end of April.

The film features the stories of students, educators, and parents caught up in the high-pressure academic culture that interferes with students' ability to learn and live balanced lives.

Frequently sold-out wherever it is shown, *Race to Nowhere* will have two Lexington screenings, both at Cary Hall (1605 Massachusetts Ave.). Show times are

- Thursday, April 28, 7:00 pm to 9:00 pm
- Friday, April 29, 10:00 am to noon.

Doors open 30 minutes before show time. General admission is \$10 in advance or \$15 at the door. Admission is free to the first 300 students and \$5.00 per student thereafter. To ensure a seat, advance registration is strongly recommended. For tickets and advance registration, visit www.racetonowhere.com/screenings.

A community conversation about the film will take place Thursday, May 5 from 7:00 pm to 8:30 pm at Temple Emunah (9 Piper Road, Lexington). This event is free-of-charge and open to all who have seen the film. Students are especially welcome. Refreshments will be served. Watch calendar listings for additional community conversations.

These special screenings of *Race to Nowhere* and follow-up community discussions are sponsored by the Lexington schools' PTAs/PTOs and the Phyllis Klein Thrope Memorial Fund of Temple Emunah. Supporting organizations include Lexington Public Schools; Lexington High School student groups: Peer Leaders, SMAD, and SADD; the Collaborative to Reduce Student Stress; the Student Health Advisory Council; and Lexington's Department of Human Services.

For more information, contact BJ Rudman (781-863-2091) or Nancy Shepard (781-674-9296) or visit <http://lhs.lexingtonma.org/Stress/>

LUMC Book Club

The LUMC Book Club is meeting in April.

Book: *A Secret Kept*

Author: Tatiana de Rosnay

Date: Tuesday, April 26

Time: 1:30 pm in the church library

New members are always welcome to join us for the discussion of a particular book or on-going. For further information, call Smoki Fraser (781-862-7394) or Shawna Johnston (781-820-5389).



Professional Woman Seeks Room to Rent

My mother, Judith Johnson, has accepted a position at Lesley University starting in April, and is looking for a room and bathroom to rent on a month to month basis with access to the kitchen in a non-smoking home. She would also consider a house-sitting arrangement or renting an apartment or condominium. She would stay 2 to 4 nights per week, returning to her home in Maine on weekends, and would prefer a home with no pets and with off-street parking. If you have a room that you would be willing to rent, or know of someone in Lexington, Arlington, Cambridge or a surrounding town who does, please contact me at lara.anthony@verizon.net or 781-259-0115.

- Thank you, Lara Anthony-

Newsletter Deadlines

Send your submission to office@lexumc.org.

4/25/11 • 5/23/11 • 6/27/11

Lexington United Methodist Church

Budget Fiscal Year 2011

	2008 Actual	2009 Actual	2010 Budget	2010 Actual	2011 Budget
PASTOR'S EXPENSES					
Salary	34,344	39,504	39,080	39,080	41,086
Housing Allowance	7,200	7,200	7,200	7,200	3,600
Reimbursed Expenses	732	200	3,000	1,946	3,000
Personal Investment Plan	1,800	1,800	1,800	1,800	1,800
Health Insurance Copay	1,956	1,956	2,178	2,178	2,400
Flexible Spending Plan	3,900	0	1,500	1,500	1,500
Total Compensation Package	49,932	50,660	54,758	53,704	53,386
Rental Housing	0	0	0	0	0
Utilities	0	0	0	0	0
Total Rental Expense	0	0	0	0	0
Moving Expense	0	0	0	0	2,000
TOTAL	49,932	50,660	54,758	53,704	55,386
STAFF & SUPPORT					
Music Director	12,300	12,615	11,356	16,999	18,375
Organist/Accompanist	10,500	10,815	11,356	1,310	0
Accompanist	600	575	800	800	800
Organist/Music Director Total	22,800	24,005	23,512	19,109	19,175
Office Administrator	19,116	20,756	22,008	21,381	23,056
Pulpit Supply	250	300	600	350	400
Christian Ed Director	6,643	0	0	4,284	10,926
Intern	0	0	2,000	0	0
Children/Youth Choir Dir.	0	0	1,800	0	0
Payroll Taxes	3,727	3,443	3,800	3,364	4,000
TOTAL	52,536	48,504	53,720	48,488	57,557
CONFERENCE EXPENSES					
World Missions	1,700	15,686	7,404	7,404	6,911
New England Missions	0	11,794	5,461	5,461	5,221
** World Missions 2008 (\$8998) and New England Missions 2008 (\$5335) were addressed monthly at Finance Committee and were paid as funds were available					
Previous Year Missions (paid in full)		0	0	0	0
Ministry Support	18,109	20,026	16,383	16,383	15,804
Previous Year Ministry Support	0	0	0	0	0
Administration	N/A	0	0	0	0
Mission Shares Total	19,809	47,506	29,248	29,248	27,936
Health Insurance	12,412	12,384	13,992	13,992	14,580
Worker's Compensation	351	368	370	384	400
Liability Insurance	730	716	720	751	800
Pension	8,520	8,723	9,201	9,201	9,899
TOTAL	41,822	69,698	53,531	53,577	53,615
LUMC MISSIONS					
Reconciling Ministries	300	300	300	300	300
Respecting Differences	0	0	0	0	0
Lexington Interfaith			200	200	200
Good Samaritan			300	0	300
TOTAL	300	400	800	500	800

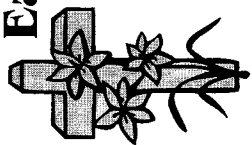
Lexington United Methodist Church Cont.
Budget Fiscal Year 2011

	2008 Actual	2009 Actual	2010 Budget	2010 Actual	2011 Budget
PARSONAGE EXPENSES					
Water	200	753	600	445	500
Electricity	0	0	0	0	700
Fuel Oil	0	0	0	0	950
Propane	149	15	300	90	150
Telephone	0	0	0	0	600
Maintenance	1,390	1,474	1,500	2,875	1,800
Contributions to Cap. Fund (Not Expense)	3,000	3,000	3,000	3,000	0
Realtor's Service Fee	0	2,280	1,300	1,200	650
Yard Care	1,879	2,194	2,200	2,547	2,600
Parsonage Cleaning/Refurbishment	0	0	0	0	1000
TOTAL	6,618	9,716	8,900	10,156	8,950
CHURCH EXPENSES					
Lexington UMC Corp	62,020	62,020	62,020	62,020	55,818
Office Supplies & Postage	1,499	1,374	1,500	730	800
Office Equipment (Appliance & Furniture)	0	93	1,200	15	2,500
Telephone	1,945	1,838	1,850	1,820	1,600
TOTAL	65,464	65,326	66,570	64,586	60,718
WORK AREAS, PROGRAMS					
Youth Group	310	358	400	40	200
Christian Education (Adult Ed.)	1,365	1,700	1,200	1,099	1,200
Worship	174	115	150	235	150
Music	757	0	500	0	100
Children's Choir	11	0	50	0	50
Stewardship	1,059	634	1,200	330	400
Child Care	38	0	50	0	100
Nurture	3,714	2,808	3,550	1,705	2,200
Outreach	585	503	800	542	600
Fellowship/Hospitality	81	9	50	555	100
Caring Ministry	52	0	50	0	50
Membership Cultivation	0	0	50	0	50
Music Programs	0	0	0	0	200
Print Advertising (Publicity)	518	897	500	53	500
Comm. Ministry (Web Site)	0	0	900	0	900
Witness	651	907	1,550	608	1,800
Financial Secretary	0	0	0	0	0
Treasurer	429	254	300	275	300
Administrative Council	0	0	0	0	0
Administrative	429	254	300	275	300
TOTAL	5,379	4,472	6,200	3,129	4,900
TOTAL	222,051	248,775	244,479	234,139	241,926

Lexington United Methodist Church Cont. Budget Fiscal Year 2011

	2008 Actual	2009 Actual	2010 Budget	2010 Actual	2011 Budget
BUDGET INCOME					
Total Pledged Toward Budget	143,814	151,974	148,029	148,029	149,512
Prepaid Current Pledges	14,740	13,500		8,985	0
Prepaid Non-Pledged		1,500		0	0
Current Year Pledges Paid	124,592	137,162	148,029	135,683	149,512
Prepaid Supplement	0	0		0	0
Current Supplement Paid	0	0		0	0
Designated Mission Share Gifts	2,000	0	0	0	0
Prev Year Pledges	2,777	3,180	2,500	565	3,907
Non-Pledged Gifts	8,283	4,502	3,000	5,105	5,100
Loose Plate Cash/Bills	811	385	300	1,137	1,100
Easter, Thanksgiving, Christmas	2,810	2,869	2,800	3,334	3,300
Methodist Weekday School Sep-Jun	29,673	50,803	40,680	40,303	40,303
Methodist weekday School Summer	5,000	5,452	5,000	5,420	5,400
Office Administrator Reimb.	4,118	7,644	10,920	7,644	8,000
Fund Raising	456	120	0	0	3,000
Gross Parsonage Rent	27,500	30,254	31,200	31,800	16,200
Interest and Dividend Income	340	164	150	49	1,000
TOTAL	223,100	257,535	244,579	240,023	236,822
(Shortfall)/Surplus	1,049	8,760	100	5883	(5104)
External Missions & Outreach Support	17,962	37,920	13,665	32,813	
World & New Eng. Mission Shares	3,700	27,480	12,865	12,865	
Other Missions from Budget	300	400	800	500	
Conference Programs	1,350	1,320		1,780	
Alternative Christmas	2,398	3,179		2,380	
Sunitha	431	294		258	
Other LUMC External Outreach	417	369		287	
Nicaragua Outreach	9,366	4,703		9,461	
Benevolent/Good Samaritan Funds	0	150		133	
Social Justice Contribution		25		5,150	

Easter Plants



If you would like to order flowers to decorate the Sanctuary for Easter on April 24, 2010, please complete the form below and return it to the church office (or put in the collection plate) with a check to cover your order by Monday, April 11, 2011.




Flower	Quantity	Amount	Total
Lily	_____	@ \$7.50 =	_____
Tulip	_____		
pink	_____	@ \$6.00 =	_____
white	_____	@ \$6.00 =	_____
yellow	_____	@ \$6.00 =	_____
red	_____	@ \$6.00 =	_____
orange	_____	@ \$6.00 =	_____
purple	_____	@ \$6.00 =	_____
Hyacinth	_____		
pink	_____	@ \$5.50 =	_____
blue	_____	@ \$5.50 =	_____
white	_____	@ \$5.50 =	_____
Total Amount Enclosed			_____

Given by _____

In memory of _____

In celebration of _____

April 2011 - Lexington United Methodist Church

Sunday	Monday	Tuesday	Wednesday	Thursday	Friday	Saturday
					1	2
<p style="text-align: center; color: red;">Fourth Sunday in Lent Holy Communion One Great Hour of Sharing</p>  <p>8:45 am Senior Choir Rehearsal 10:00 am Worship; Nursery Care 11:00 am Fellowship in Martin Hall 11:30 am Staff Parish Relations Cte.</p>	4	5	6	7	8	9
<p style="text-align: center; color: red;">Fifth Sunday in Lent</p> <p>8:45 am Senior Choir Rehearsal 10:00 am Worship; Nursery Care 10:00 am <i>Godly Play</i> (N - 5) 11:00 am Fellowship in Martin Hall 11:30 am 11th Hour for Adults and Youth</p>	<p style="text-align: center;">Deadline for ordering Easter flowers</p> <p>12:15 MWS Cte. Meeting 7:30 pm Ad. Council</p>	<p style="text-align: center;">12</p> <p>9:45 am District Committee on Ministry 3:00 pm Jazz Time 7:15 pm Nurture Committee</p>	13	14	15	16
<p style="text-align: center; color: purple;">Palm/Passion Sunday</p> <p>8:45 am Senior Choir Rehearsal 10:00 am Worship; Nursery Care 10:00 am <i>Godly Play</i> (N - 5) 11:00 am Fellowship in Martin Hall 11:30 am 11th Hour for Adults and Youth</p> 	18	19	20	<p style="text-align: center; color: red;">Maundy Thursday</p> <p>10:30 am Witness Committee 7:00 pm Worship 8:00 pm Senior Choir Rehearsal</p>	22	23
Holy Week						
<p style="text-align: center; color: purple;">Easter Sunday Roxbury Food Cupboard Collection</p> <p>7:00 am Sunrise Service and breakfast 8:45 am Senior Choir Rehearsal 10:00 am Worship; Nursery Care 11:00 am Fellowship in Martin Hall Easter Egg Hunt</p> 	<p style="text-align: center; color: blue;">Newsletter Deadline</p>	<p style="text-align: center;">26</p> <p>1:30 Book Club 3:00 pm Jazz Time</p>	27	<p style="text-align: center;">28</p> <p>8:00 pm Senior Choir Rehearsal</p>	<p style="text-align: center;">29</p> <p>12:30 pm Newsletter Collation</p>	30

April 2011 Newsletter

Rev. Richard Capron, Ph.D., Pastor
Ian Woods, Music Director
Marla Marcum, Christian Education Director
Allyson Printz, Office Administrator

Telephone 781-861-9301
Fax 781-861-7228
Website www.lexumc.org
Office Email office@lexumc.org

Sunday Program

8:30 am Senior Choir Rehearsal
10:00 am Worship; Nursery Care
10:00 am *Godly Play* (N-5)
10:00 am Youth Group
11:00 am Fellowship in Martin Hall
11:30 am 11th Hour for Adults and Youth

Holy Week Events

Palm Sunday (April 17): Palms and Worship at 10:00 am
in the Sanctuary

Maunder Thursday (April 21): Service of Holy Communion
at 7:00 pm in the Sanctuary

Easter Sunday (April 24)

- Sunrise Service in the Prayer Garden at 7:00 am
- Breakfast to follow
- Easter Worship at 10:00 am in the Sanctuary
- Easter Egg Hunt and Fellowship Time to follow



LEXINGTON UNITED METHODIST CHURCH

an inclusive and reconciling congregation

2600 Massachusetts Avenue
Lexington, MA 02421-6718

RETURN SERVICE REQUESTED

